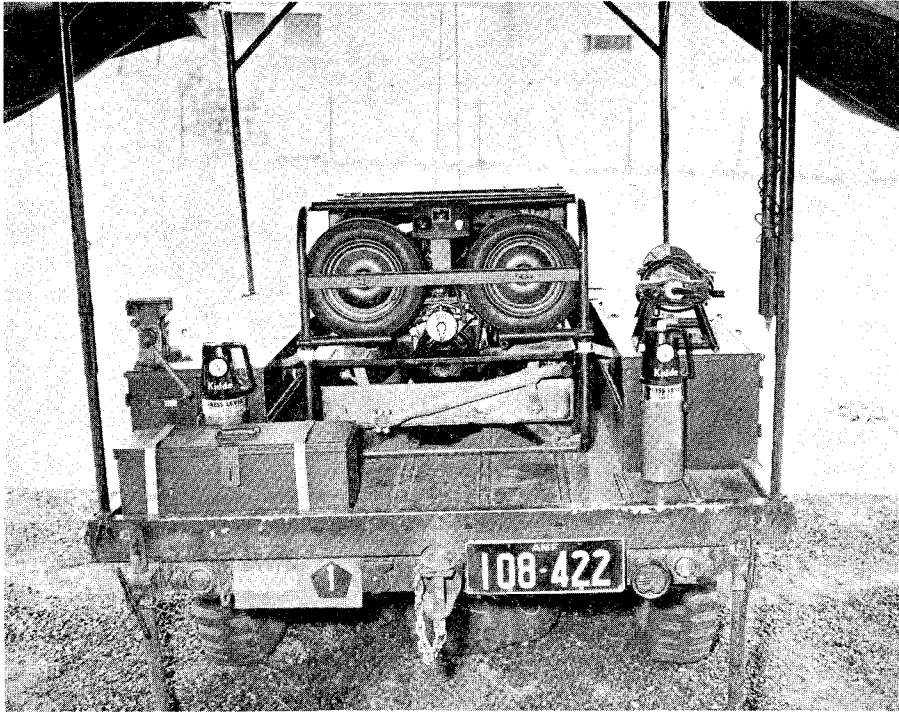


**WELDING SHOP, TRAILER MOUNTED, 1/2 TON, ARC/GAS  
DATA SUMMARY**

**Purpose**

1. This equipment is used to provide welding facilities in the field. This instruction has been completely revised.



**General Data**

**2. Mass.**

- a. Unladen : 430 kg
- b. Maximum laden : 810 kg

**3. Wheels and Tyres.**

- a. Type : 16 inch rim
- b. Tyre - Size : 7.50-16; 6 ply
- c. Tread : Cross country-Non directional
- d. Pressures
  - (1) On highway: 320 kPa
  - (2) Cross country : 200 kPa
  - (3) Mud and sand : 150 kPa

**4. Dimensions.**

- a. Length overall : 3 200 mm
- b. Width overall : 1 375 mm
- c. Height overall : 2 030 mm
- d. Track : 1 320 mm
- e. Ground clearance: 355 mm
- f. Tray height : 800 mm
- g. Rail gauging : Clears All States

**5. Shipping Data (Volume).**

11 m<sup>3</sup>

**6. Electrical System.**

- a. Lighting : 12V
- b. Connector plug : 12 pin NATO

**7. Performance.**

- a. Angle of approach : 26 degrees
- b. Angle of departure : 34 degrees

- 8. Normal Prime Mover.** Truck Cargo 3/4 Ton GS  
Truck Utility Light GS

**TABLE 1 - WELDING SHOP EQUIPMENT**

Designation	Qty
Extension, Adjustable, bow vehicle	1
Frame Cover, Vehicular Body	1
Post Corner, Long	2
Post Corner, Short	2
Top Assembly Extension Kit, Vehicular	
Fitting w/o floor	1

**TABLE 2 - LIGHTING AND  
POWER EQUIPMENT**

Designation	Qty
2 core 460 mm c/w socket and lugs	1
3 core 1830 mm c/w plug and power outlets	1
3 core 1830 mm c/w plug and socket	4
3 core 9140 mm c/w plug and socket	1
Light, Extension, fluorescent w/cable, 20W, 240V ac	3
Nibbler, Electric, Portable, 240V, 14 SWG	1
Panel, Power Distribution	1
Rod Earthing, MS, 910 mm lg by 35 mm dia	1

TABLE 3 – TECHNICAL EQUIPMENT

Designation	Qty
Dividers, Mechanics, wing type 205 mm	1
Drill, Electric, Portable, 6 mm, 240V ac heavy duty	1
Drill Set, Twist, 1 mm to 12 mm	1
Clamp 'C' medium service, w/thumbscrew drive, 100 mm	1
Clamp 'C' medium service, w/thumbscrew drive, 150 mm	1
Anvil, Blacksmiths, single horn 25 kg	1
Blanket, Fire, asbestos 1 830 mm by 1 830 mm	1
Brick Refractory, Straight, 230 mm by 110 mm by 80 mm	2
Brush, Dusting, Bench, 300 mm lg	1
Tool Kit, Body and Fender Repair	1
Vice Bench and Pipe, Universal, w/cylinder head holding plug and jaw grips 100 mm w	1
Welding Machine, ARC, generator type 350 amp	1
Tongs, Blacksmith, flat 455 mm lg	1
Tongs, Blacksmith, Gad or bolt type 510 mm lg	1
Tongs, Blacksmith, hollow nose 455 mm lg	1
Flatter, Blacksmiths, handled, 65 mm sq face	1
Goggles, industrial	1
Hammer, Hand, sledge 4.5 kg	1

9. Associated Publications.

- a. AC in WM : 25248
- b. CES : 2375
- c. Census Code No : 6017H
- d. RPS : AUST/MT/02060 (Chassis only)

END